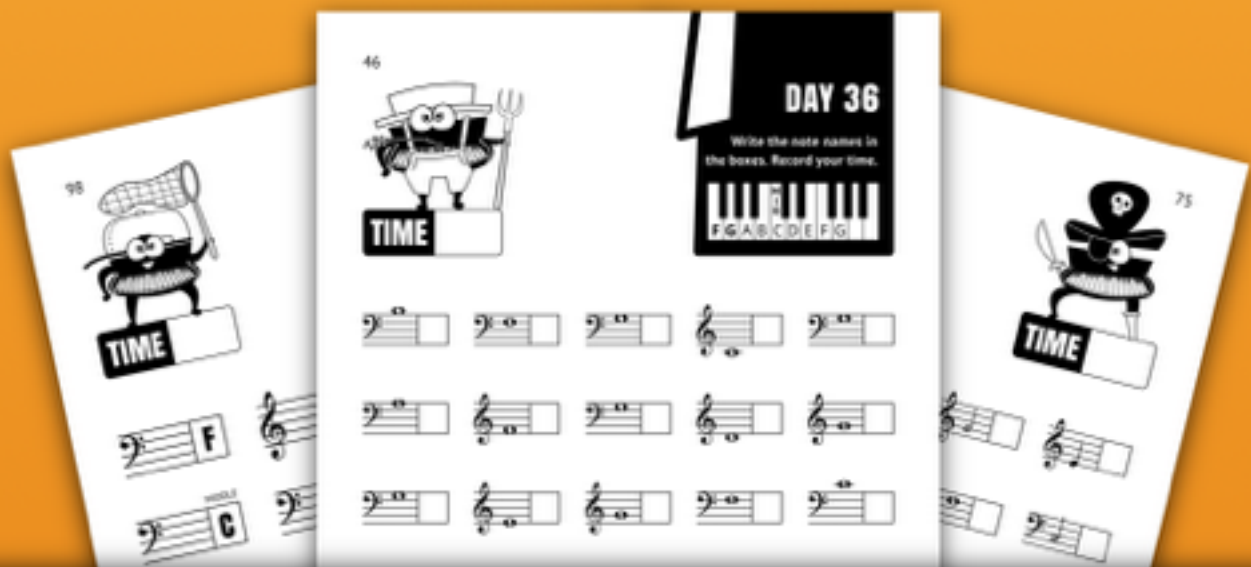


andrea and trevor
DOW'S

TIMED NOTE READING TESTS



FOR PIANO, BOOK 1



90 DAYS OF EXERCISES IN MIDDLE C POSITION AND C POSITION

This is a preview (29 of 107 pages).
Pages have been removed from
various sections.



TIMED NOTE READING TESTS FOR PIANO

BOOK 1: 90 DAYS OF EXERCISES IN MIDDLE C POSITION AND C POSITION



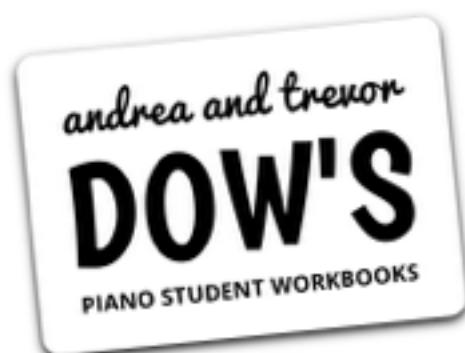
Andrea and Trevor Dow's Timed Note Reading Tests For Piano, Book 1
Copyright © 2020 Teach Music Today Learning Solutions
www.teachpianotoday.com and www.wunderkeys.com

All Rights Reserved. This book or parts thereof may not be reproduced in any form, stored in any retrieval system, or transmitted in any form by any means - electronic, mechanical, photocopy, recording, or otherwise - without prior written permission of the publisher, except as provided by copyright law.



For great piano players, note reading is second nature. The instantaneous ability to transfer notes on a page to sounds on a piano frees them up to focus on the little things that make music magical. It is, therefore, essential that students learn to note read fluently as soon as possible.

There are many tools to improve note reading; this book is one of them. Encourage your children or students to sit down with this book once a day for a few short minutes. 90 days from now, their note reading skills will be second nature.





| | |
|-----|---|
| 4 | Naming Keys |
| 10 | Middle C D |
| 14 | B Middle C Middle C D |
| 22 | A B Middle C Middle C D E |
| 32 | A B Middle C Middle C D E F G |
| 42 | F G A B Middle C Middle C D E F G |
| 54 | Beginning Intervals, Part 1 |
| 58 | Bass C D E F G Middle C D E F G |
| 76 | Beginning Intervals, Part 2 |
| 80 | Review |
| 104 | Answer Keys |



DAY 15

In each box, draw a note that matches the first note.



Sample



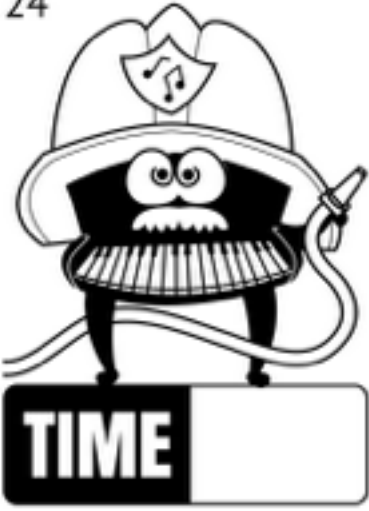
DAY 15

Draw half notes that match the note names.



Sample

| | | | |
|--|--|--|--|
| | | | |
| | | | |
| | | | |



DAY 16

Write the note names in the boxes. Record your time.

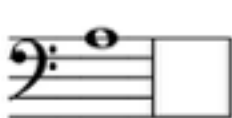
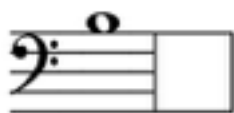


Sample

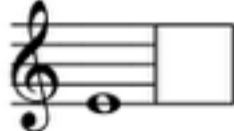
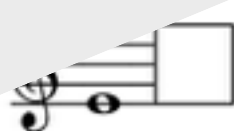
Handwriting practice area consisting of 15 musical staves. Each staff contains a single note on a five-line staff with a box to its right for writing the note name. The notes are: Bass clef, G4; Treble clef, E4; Bass clef, G4; Bass clef, G4; Treble clef, E4; Bass clef, G4; Treble clef, E4; Bass clef, G4; Treble clef, E4; Treble clef, E4; Treble clef, E4; Treble clef, E4; Bass clef, G4; Treble clef, E4; Bass clef, G4; Treble clef, E4; Bass clef, G4.

DAY 17

Write the note names in the boxes. Record your time.



Sample





DAY 18

Write the note names in the boxes. Record your time.



Sample

A grid of musical staves for note identification. The grid consists of 10 rows and 5 columns of staves. Each staff contains a single note. The notes are: Row 1: Bass clef, G4; Treble clef, E4; Bass clef, G4; Bass clef, G4; Treble clef, E4. Row 2: Bass clef, G4; Treble clef, E4; Treble clef, E4. Row 3: Treble clef, E4. Row 4: Treble clef, E4. Row 5: Treble clef, E4; Bass clef, G4; Bass clef, G4. Row 6: Treble clef, E4; Treble clef, E4; Bass clef, G4; Treble clef, E4; Treble clef, E4.



DAY 33

In each box, draw a note that matches the first note.



F

A musical staff with a treble clef. A single note is drawn on the second line. A rectangular box is drawn above the staff, intended for drawing a matching note.

G

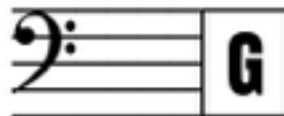
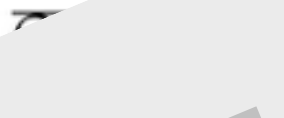
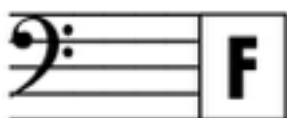
A musical staff with a treble clef. A single note is drawn on the first space. A rectangular box is drawn above the staff, intended for drawing a matching note.

Sample

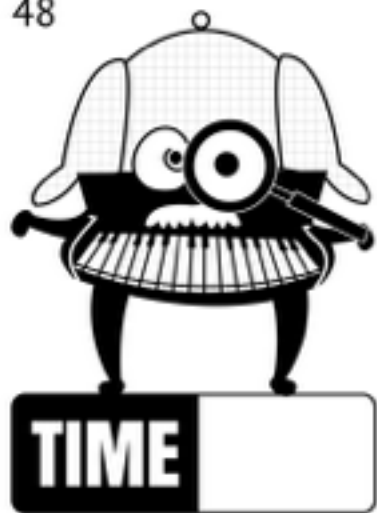
A musical staff with a treble clef. Two notes are drawn: one on the second line and one on the first space. Below the staff are three empty rectangular boxes, intended for drawing notes that match the ones above.

DAY 33

Draw quarter notes that match the note names.



Sample



DAY 38

Write the note names in the boxes. Record your time.



Sample

A grid of musical staves for note identification. The grid consists of 10 rows and 5 columns of staves. Each staff contains a single note. The notes are: Row 1: Bass clef, G2; Bass clef, A2; Bass clef, B2; Bass clef, C3; Treble clef, D4. Row 2: Bass clef, E3; Treble clef, F4; Bass clef, G3. Row 3: Treble clef, A4. Row 4: Treble clef, B4. Row 5: Treble clef, C5. Row 6: Treble clef, D5. Row 7: Treble clef, E5. Row 8: Bass clef, F3; Bass clef, G3; Bass clef, A3. Row 9: Treble clef, B4; Treble clef, C5; Treble clef, D5. Row 10: Treble clef, E5; Treble clef, F5; Treble clef, G5; Treble clef, A5; Treble clef, B5.

DAY 39

Write the note names in the boxes. Record your time.



Sample



DAY 40

Write the note names in the boxes. Record your time.



Sample

DAY 41

Write the note names in the boxes. Record your time.



Sample

| | | | | |
|--|--|--|--|--|
| | | | | |
| | | | | |
| | | | | |
| | | | | |
| | | | | |



A BRIEF BREAK FOR INTERVALS

1

REPEAT STEP UP STEP DOWN

LET'S PRACTICE DRAWING
STEPS AND SKIPS



DAY 44

On each staff, draw a quarter note to create the labeled interval.



SKIP UP STEP DOWN SKIP DOWN STEP UP

SKIP UP STEP DOWN

SKIP UP

STEP DOWN SKIP DOWN

STEP UP STEP UP STEP DOWN

Diagram illustrating musical intervals on staves. Each interval is represented by a staff with a starting note and a target note. The intervals are: SKIP UP (treble clef, G4 to A4), STEP DOWN (bass clef, G3 to F3), SKIP DOWN (bass clef, G3 to E3), STEP UP (treble clef, G4 to A4), SKIP UP (bass clef, G3 to A3), STEP DOWN (treble clef, G4 to F4), SKIP UP (treble clef, G4 to A4), STEP DOWN (bass clef, G3 to F3), SKIP DOWN (treble clef, G4 to E4), STEP UP (treble clef, G4 to A4), STEP UP (treble clef, G4 to A4), and STEP DOWN (bass clef, G3 to F3).

Sample



DAY 45

Circle the symbol above each staff that matches the interval.

SK = SKIP | ST = STEP | R = REPEAT

SK | ST | R

SK | ST | R

SK | ST | R

SK | ST | R

SK | ST | R

SK | ST | R

SK | ST | R

SK | ST | R

Sample

SK | ST | R

SK | ST | R

SK | ST | R

SK | ST | R

SK | ST | R

SK | ST | R

SK | ST | R

SK | ST | R

SK | ST | R

SK | ST | R

SK | ST | R

SK | ST | R



AN INTRO

DAY 47

In each box, draw a note that matches the first note.

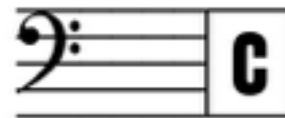
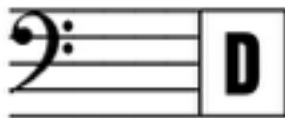
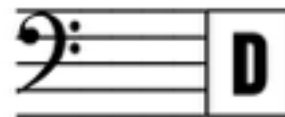
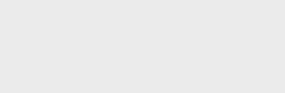
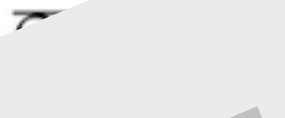
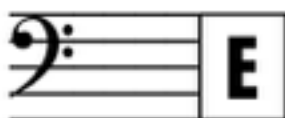


C

Sample

DAY 47

Draw half notes that match the note names.



Sample



DAY 56

Write the note names in the boxes. Record your time.

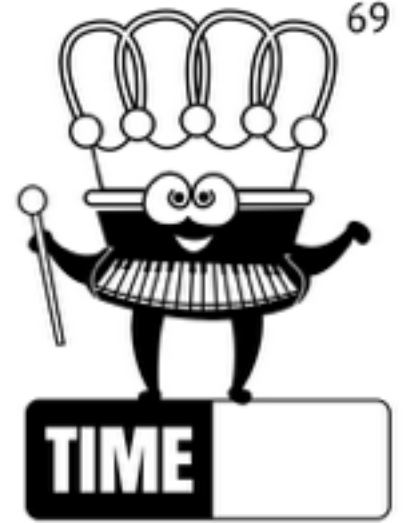


Sample

A grid of musical staves for note identification practice. The grid consists of 10 rows and 5 columns of staves. Each staff contains a single musical note. The notes are: Row 1: G2, F2, E2, D2, C2; Row 2: C2, D2, E2, F2, G2; Row 3: G2, F2, E2, D2, C2; Row 4: C2, D2, E2, F2, G2; Row 5: G2, F2, E2, D2, C2; Row 6: C2, D2, E2, F2, G2; Row 7: G2, F2, E2, D2, C2; Row 8: C2, D2, E2, F2, G2; Row 9: G2, F2, E2, D2, C2; Row 10: C2, D2, E2, F2, G2.

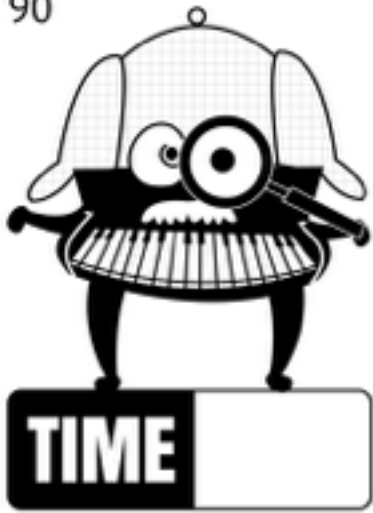
DAY 57

Write the note names in the boxes. Record your time.



Sample

| | | | | |
|--|--|--|--|--|
| | | | | |
| | | | | |
| | | | | |
| | | | | |
| | | | | |
| | | | | |
| | | | | |
| | | | | |
| | | | | |



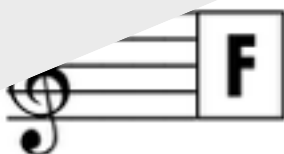
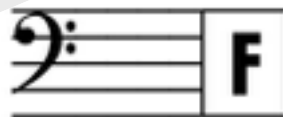
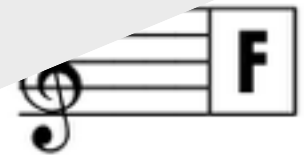
DAY 77

Review Test 11

Note Printing - Quarter Notes



Sample



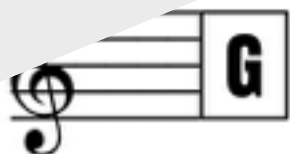
DAY 78

Review Test 12

Note Printing - Half Notes



Sample



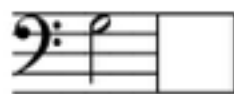
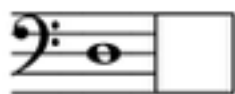


DAY 79

Review Test 13 Note Reading Practice



Sample

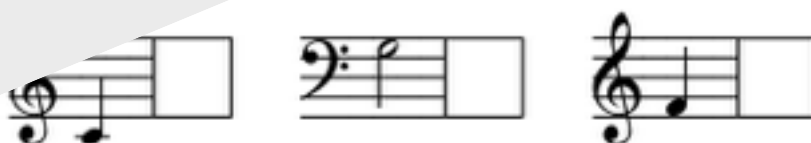


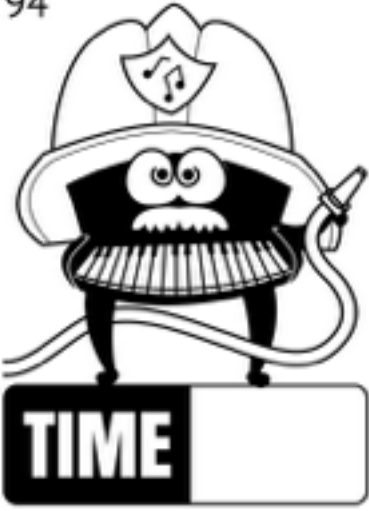
DAY 80

Review Test 14
Note Reading Practice



Sample

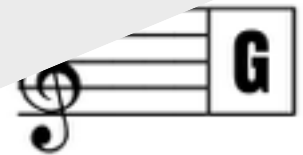
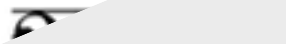
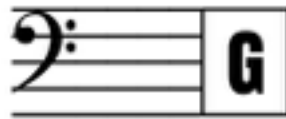
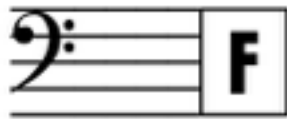




DAY 81

Review Test 15

Note Printing - Whole Notes

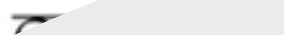


Sample

DAY 82

Review Test 16

Note Printing - Quarter Notes



Sample



DAY 83

Review Test 17 Note Reading Practice

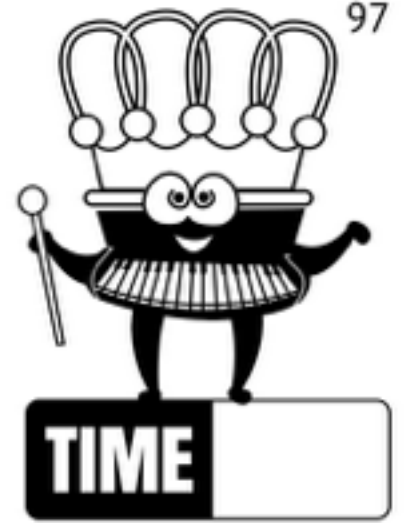


Sample

A grid of musical notation for note reading practice. It consists of 15 rows of staves. The first row contains five bass clef staves, each with a single note. The second row contains three staves: a treble clef staff with a note, followed by two bass clef staves with notes. The third row contains two staves: a treble clef staff with a note, followed by a bass clef staff with a note. The fourth row contains one staff: a treble clef staff with a note. The fifth row contains three staves: a bass clef staff with a note, a treble clef staff with a note, and another treble clef staff with a note. The sixth row contains five staves: a treble clef staff with a note, a bass clef staff with a note, a treble clef staff with a note, a bass clef staff with a note, and a bass clef staff with a note.

DAY 84

Review Test 18
Note Reading Practice



Sample

Thank you for previewing
**Andrea And Trevor Dow's
Timed Note Reading Test
For Piano, Book 1.**

[Click here to purchase this book.](#)