

1

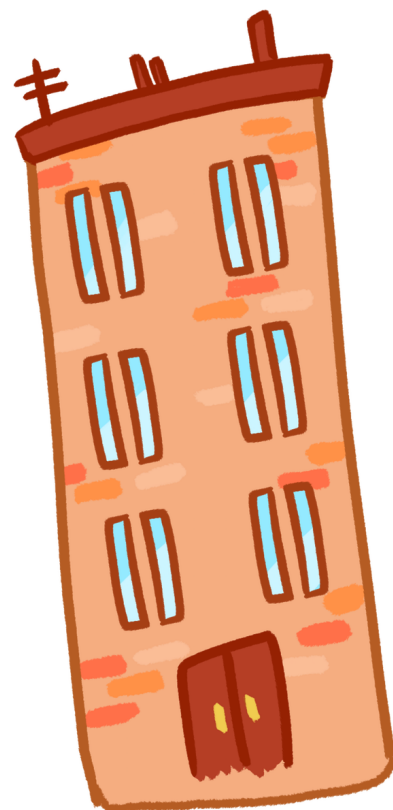
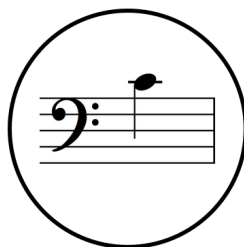
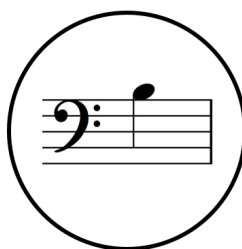
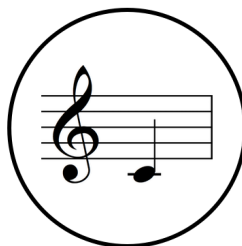
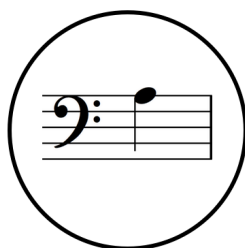
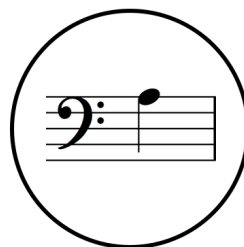
Close your eyes while your teacher uses a colored crayon to draw a line that begins at the rhino, passes through four circles, and ends at the building.

2

Open your eyes and then, with your hands in Middle C Position, play the four notes that rest on the path drawn in Step 1.

3

Next, your teacher will **draw a path** with a different crayon so you can play again.



PRIMER LEVEL