

SEARCHING FOR

CHOPIN'S



KEYS

CLASSICAL POP
PIANO GAMES

Reinforcing Understanding of Key Signatures with

SEARCHING FOR CHOPIN'S KEYS

by Andrea and Trevor Dow

TEACHPIANOTODAY

© 2018 Teach Music Today Learning Solutions

This musical game file is intended for use in the purchasing teacher's private studio. Permission is granted to the purchasing teacher for duplication and use within a private studio. Duplication for resale is not permitted. This game or parts thereof may not be stored in any retrieval system, or transmitted in any form by any means—electronic or otherwise—without prior written permission of the publisher, except as provided by copyright law. Any adaptation of this copyrighted material requires the written consent of the copyright owner.

HOW TO PLAY

Players:

2 players

Materials:

six game strips, two pencils,
18 playing cards, two dice

Game Objective:

Musical Objective: To reinforce understanding of major and minor key signatures
Game Objective: To complete the missing key signature on a game strip

Setting It Up:

Before the game begins, players should print and cut out the game strips and the cards (the cards must be printed double-sided). Next, players should sit opposite one another with the deck of cards placed between. Each player should have a die and a game strip with a missing key signature.

Playing The Game:

- 1) To begin, either player flips over the top card of the deck to reveal the name of a key. At this point the game becomes a race. Step 2 below (while explained for Player 1 only) will be performed by both players simultaneously.
- 2) As soon as the name of the key on the back of the card in Step 2 is revealed, Player 1 races to roll a number on her die that corresponds to the number of sharps or flats in the key signature of the key.
- 3) The first player to roll a value that matches the number of sharps or flats in the key signature of the key revealed on the card in Step 1, wins the round.
- 4) The player winning the round uses her pencil to draw **one accidental** onto the missing key signature of the musical excerpt displayed on her game strip. The musical excerpts on the game strips are taken from famous piano pieces composed by Chopin. The names of the keys of the musical excerpts (for example, Prelude In Db Major) are found in the titles at the top of the game strips. Players use these key names to help determine which accidental(s) should be drawn in the key signatures. *Important: The accidental drawn onto the game strip in this step does not have to be related to the key name on the card flipped over in Step 1.*
- 5) Steps 1 - 4 are repeated until a player fully **completes the missing key signature** on her game strip and wins the game.

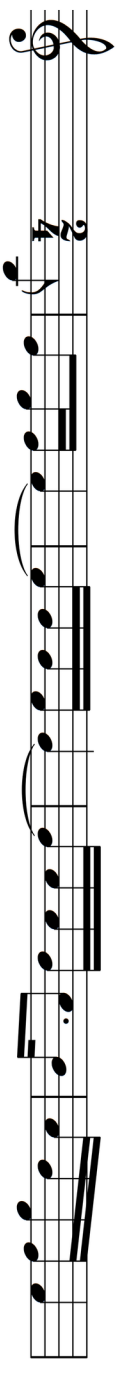
Note:

- 1) Some musical excerpts on the game strips require more accidentals to complete their missing key signatures than others. This is intentional and adds to the fun. When selecting game strips at the beginning of the game, players must close their eyes so that they cannot search for the musical excerpt containing the fewest required accidentals for its missing key signature.

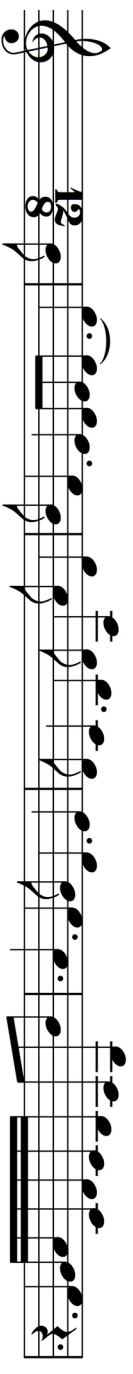
This page has been left blank for teachers wishing to
apply double-sided printing.



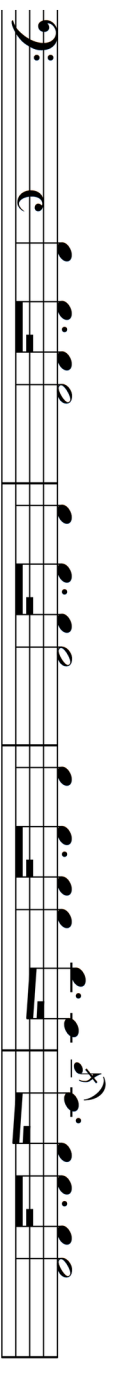
ÉTUDE IN E MAJOR



NOCTURNE IN E \flat MAJOR



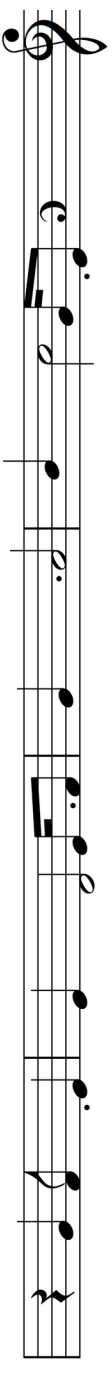
PIANO SONATA NO. 2 IN B \flat MINOR



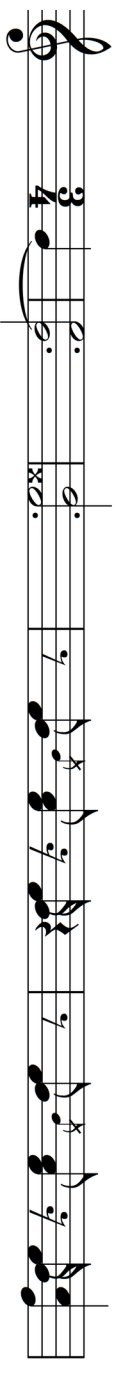
This page has been left blank for teachers wishing to
apply double-sided printing.



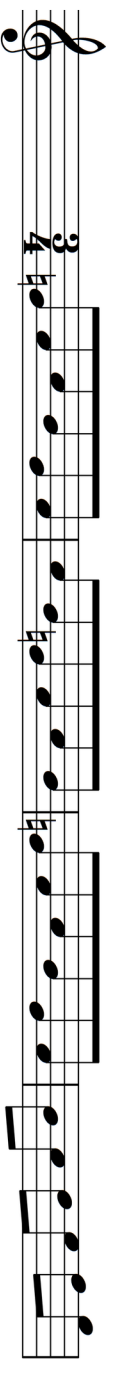
PRELUDE IN D \flat MAJOR



WALTZ IN C \sharp MINOR



WALTZ IN D \flat MAJOR



This page has been left blank for teachers wishing to
apply double-sided printing.

PLAYING



CARDS

PLAYING



CARDS

PLAYING



CARDS

PLAYING



CARDS

PLAYING



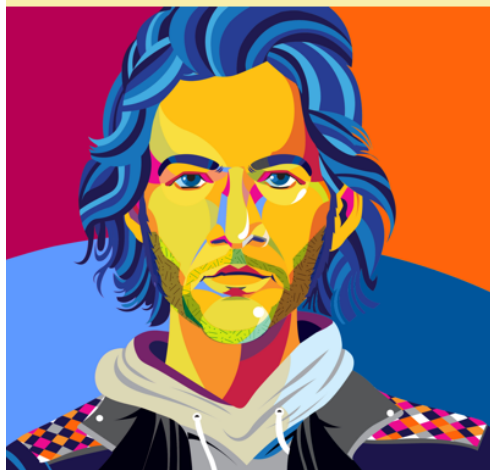
CARDS

PLAYING



CARDS

PLAYING



CARDS

PLAYING



CARDS

PLAYING



CARDS

E_b
MAJOR

F
MAJOR

B
MAJOR

B_b
MAJOR

A_b
MAJOR

E
MINOR

D_b
MAJOR

F
MINOR

F_#
MINOR

PLAYING



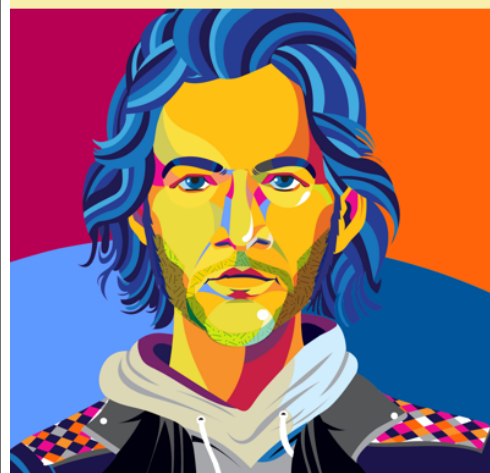
CARDS

PLAYING



CARDS

PLAYING



CARDS

PLAYING



CARDS

PLAYING



CARDS

PLAYING



CARDS

PLAYING



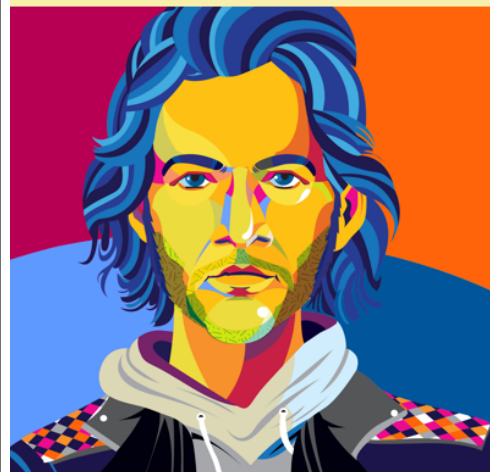
CARDS

PLAYING



CARDS

PLAYING



CARDS

G
MINOR

C
MINOR

D
MINOR

A
MAJOR

E
MAJOR

D
MAJOR

B
MINOR

C#
MINOR

G
MAJOR