



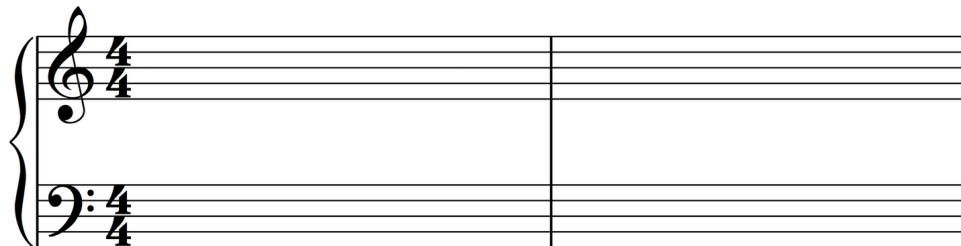
WUNDERKEYS ROCK REPERTOIRE FOR TEEN BEGINNERS

- 1 A motive is the backbone of a piano piece. It needs a rhythm and a melody. Let's build a motive.
- 2 Place your hands on the piano in Middle C Position. Using any combination of A, B, C, D and E, improvise a melody for Rhythm #1. On the staff below Rhythm #1, combine your melody with the rhythm and record your motive.
- 3 Repeat Step 2 for Rhythm #2. Next, put a check beside your favorite motive. On the piano piece that follows this page, write your selected motive on the blank measures of music.

RHYTHM #1



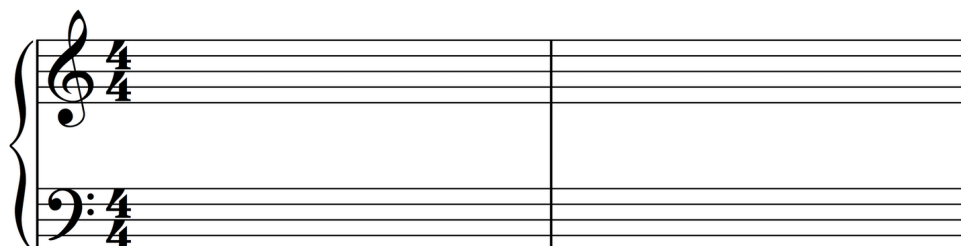
MOTIVE #1



RHYTHM #2



MOTIVE #2



COMPOSING WITH TEEN BEGINNERS



WUNDERKEYS ROCK REPERTOIRE

- 1 Write your selected motive from the previous page on the empty measures below.
- 2 Practice playing your piano piece. When you are ready, perform the piece as a duet with your piano teacher.

Handwritten musical notation for measures 1-4 in 4/4 time. The notation is written on a grand staff (treble and bass clefs). The melody in the treble clef consists of quarter notes: C4, D4, E4, F4, G4, A4, B4, C5. The bass clef has whole rests for the first two measures, followed by quarter notes: C3, D3, E3, F3, G3, A3, B3, C4.

Handwritten musical notation for measures 5-8 in 4/4 time. The notation is written on a grand staff. The melody in the treble clef consists of quarter notes: C4, D4, E4, F4, G4, A4, B4, C5. The bass clef has whole rests for the first two measures, followed by quarter notes: C3, D3, E3, F3, G3, A3, B3, C4.

Handwritten musical notation for measures 9-12 in 4/4 time. The notation is written on a grand staff. The melody in the treble clef consists of quarter notes: C4, D4, E4, F4, G4, A4, B4, C5. The bass clef has whole rests for the first two measures, followed by quarter notes: C3, D3, E3, F3, G3, A3, B3, C4.

Handwritten musical notation for measures 13-16 in 4/4 time. The notation is written on a grand staff. The melody in the treble clef consists of quarter notes: C4, D4, E4, F4, G4, A4, B4, C5. The bass clef has whole rests for the first two measures, followed by quarter notes: C3, D3, E3, F3, G3, A3, B3, C4.

TEACHER DUET:

Handwritten musical notation for the Teacher Duet section. The notation is written on a grand staff. The melody in the treble clef consists of quarter notes: C4, D4, E4, F4, G4, A4, B4, C5. The bass clef has whole rests for the first two measures, followed by quarter notes: C3, D3, E3, F3, G3, A3, B3, C4.