



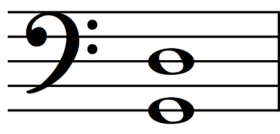
WUNDERKEYS ROCK REPERTOIRE

FOR TEEN BEGINNERS

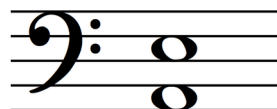
- 1 Before playing the Pop Music Sight Reading, practice reading and playing the four pop piano chords below. Next, practice playing repeating chord progressions on the pop piano chords (ie. C - F - G - Am or C - G - Am- F).
- 2 When you are comfortable playing chord progressions on the pop piano chords, move on to the sight-reading activity.



F



G



Am



C

POP MUSIC SIGHT READING

Beginning at the START and ending at the FINISH, play the four measures of music that rest on the dotted path. Next, I will use a colored crayon to draw a new four-measure path that begins at the START and ends at the FINISH. Try playing along the new path. **Let's play again.**

The diagram illustrates a sight-reading activity. It features a grid of six boxes arranged in two rows and three columns. The top-left box is labeled 'START' and contains a musical score for a piano in 4/4 time, with a treble clef and a bass clef. The first measure of the treble clef has a '1' above it. The bottom-right box is labeled 'FINISH' and contains a musical score with a double bar line at the end of the first measure. A dotted path connects the 'START' box to the 'FINISH' box, passing through four intermediate boxes. The path starts at the top-left box, moves right to the top-middle box, then down to the bottom-middle box, then right to the bottom-right box, and finally up to the top-right box. The path ends at the 'FINISH' box. The intermediate boxes contain musical notation for the first and second staves of a piano score, with the first staff having a treble clef and the second staff having a bass clef. The path starts at the first note of the first staff in the top-left box and ends at the first note of the first staff in the top-right box.