

Today we are sharing a Halloween Triad Training Lead Sheet for your teen piano students. This spooky, pop-infused piano piece is the coolest way to reinforce the G minor triad.

## HALLOWEEN TRIAD TRAINING

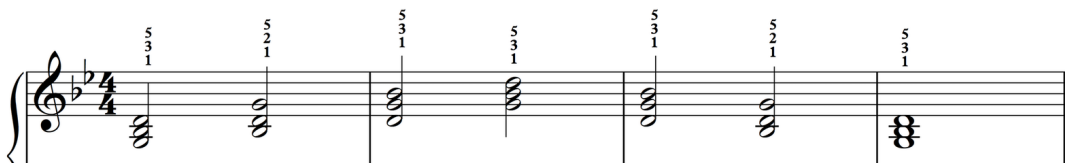


## HALLOWEEN TRIAD TRAINING

Let's put some pop in your triad training with lead sheets. A **lead sheet** uses chord symbols above the treble staff in place of the bass staff. Chord symbols dictate which chords your left hand plays while accompanying your right hand.

### LET'S GET STARTED

- 1 The G minor triad consists of the i chord (root) and its first and second inversions. Let's practice playing the triad of G minor. We'll begin with a solid triad.



# WUNDERKEYS INTERMEDIATE PIANO

The WunderKeys Intermediate Piano Program is divided into four levels (1 – 4). Each level contains two books. The first two levels are explored below.

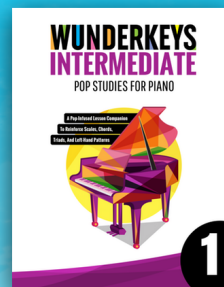
Piano students are ready to start in the WunderKeys Intermediate Level 1 books when they have completed Piano Adventures Level 2B, Alfred Premier 2B, Alfred Basic 2, Bastien 2, ABRSM Grade 1, RCM Preparatory or WunderKeys Elementary Piano Level 2.

**Click on a button to learn more.**



Intermediate Pop Studies For Piano 1 contains pop-infused studies to reinforce scales, chords, triads, and left-hand patterns in C Major, A Minor, G Major, E Minor, F Major, and D Minor.

Performance 1 supports Pop Studies 1 with piano pieces inspired by Mozart, Beethoven and more, thundering Celtic solos and original pop solos.



POP STUDIES 1

**BUY NOW**



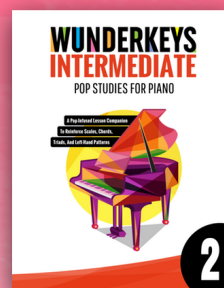
PERFORMANCE 1

**BUY NOW**

**INTERMEDIATE LEVEL 1**

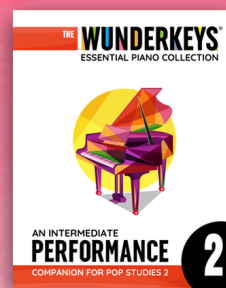
Intermediate Pop Studies For Piano 2 contains pop-infused studies to reinforce scales, chords, triads, and left-hand patterns in D Major, B Minor, Bb Major, G Minor, A Major, and F# Minor.

Performance 2 supports Pop Studies 2 with piano pieces inspired by Mozart, Beethoven and more, thundering Celtic solos and original pop solos.



POP STUDIES 2

**BUY NOW**



PERFORMANCE 2

**BUY NOW**

**INTERMEDIATE LEVEL 2**

# HALLOWEEN TRIAD TRAINING



Let's put some pop in your triad training with lead sheets. A **lead sheet** uses chord symbols above the treble staff in place of the bass staff. Chord symbols dictate which chords your left hand plays while accompanying your right hand.

## LET'S GET STARTED

- 1 The G minor triad consists of the i chord (root) and its first and second inversions. Let's practice playing the triad of G minor. We'll begin with a solid triad.

- ▶ Now let's practice playing the broken triad of G minor. When playing a broken triad your tone should be smooth and even. Be careful not to accent the first note of each broken inversion.

**2** Next, let's learn how to play from a lead sheet. A lead sheet looks like this:

▶ When practicing the line of music above, you can play the chords as held fifths, like this:

▶ Finally, play the lead sheet below to rock the G minor triad (add pedal when comfortable).