



Use today's printable mazes to reinforce note reading in middle C position.

## NOTE READING MAZES

### MAZE MUMMY 1

Select a note name and then find the box with its matching note image. Next, use a colored pencil to trace a path from the note name to the note image. Play again with a new note name and note image.



Labels in maze: G, G, E, D, F

### MAZE MUMMY 2

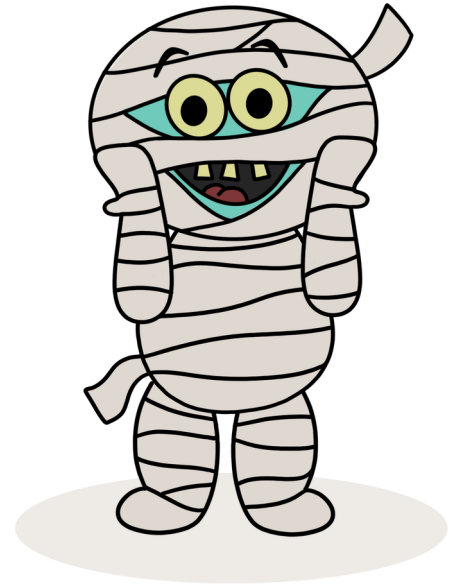
Select the box with the note name and use a colored pencil to trace a path from the note name to the note image.



Labels in maze: G, A, G

# HALLOWEEN MUSIC

Mid-primer piano students using *Mummy Rocks The Costume Contest* will gain confidence playing middle C music in 3/4 and 4/4 time with stepping and skipping notes. This exciting resource contains Halloween piano songs, note reading games, warm-up exercises, a rhythm activity, a sight reading activity, a practice tracker, and a certificate of achievement.



Andrea and Trevor Dow's  
VERY USEFUL PIANO LIBRARY

V.U.  
LEVEL  
G

# MUMMY

ROCKS THE  
COSTUME CONTEST

NOTE READING  
Beginning at the mummy and ending at the bat, draw a line that passes through every note circle. In Box 1, write the name of each note in each circle that rests on your path. Next, draw a new path and write the note names in Box 2. Finally, play again.

21

CONTEST

AST

HALLOWEEN SONGS AND ACTIVITIES  
FOR MID-PRIMER PIANO STUDENTS

AVAILABLE ON AMAZON

**BUY NOW**

Andrea and Trevor Dow's  
VERY USEFUL PIANO LIBRARY

# MAZE MUMMY 1

Select a note name and then find the box with its matching note image. Next, use a colored pencil to trace a path from the note name to the note image. Play again with a new note name and note image.



A large square maze with a black border. Inside the maze, there are several black circles containing white letters: 'C' in the top-left corner, 'G' in the top-right area, 'E' in the middle-left area, 'D' in the middle-right area, and 'F' in the bottom-left area. To the left of the maze, there are two square boxes, each containing a musical staff with a treble clef and a single note. To the right of the maze, there are three square boxes, each containing a musical staff with a treble clef and a single note. Arrows point from the maze towards these boxes: two arrows on the left point to the two boxes, and three arrows on the bottom point to the three boxes. A cartoon mummy character is walking towards the maze from the bottom-left corner.

# MAZE MUMMY 2

Select a note name and then find the box with its matching note image. Next, use a colored pencil to trace a path from the note name to the note image. Play again with a new note name and note image.



The maze contains the following note names in boxes:

- F (top left)
- C (top right)
- A (center)
- G (middle right)
- B (bottom left)

There are two musical staff boxes on the left side of the maze, each containing a bass clef and a single note on the second line. Below the maze are three musical staff boxes, each containing a bass clef and a single note on the second line. A mummy character is at the bottom left of the maze, with arrows pointing downwards from the maze towards the three boxes at the bottom.