

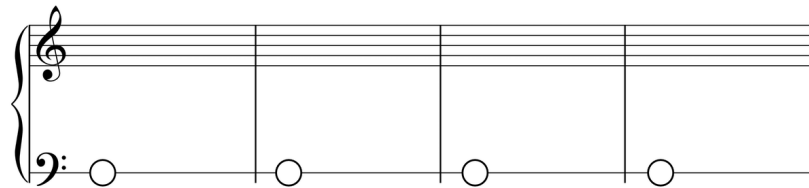
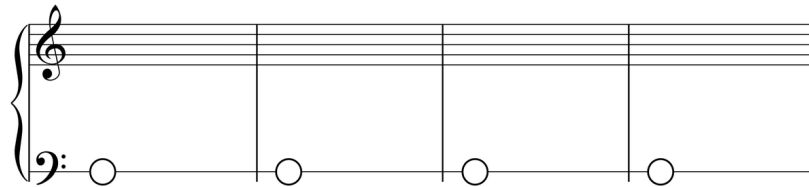
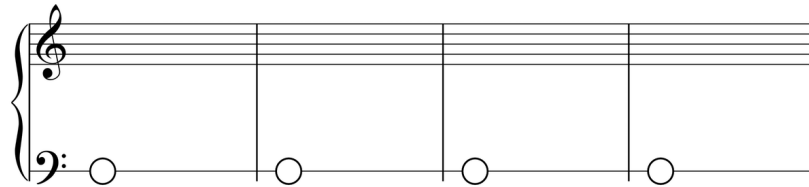
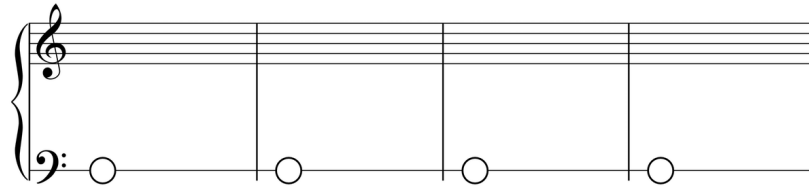
Improve the older beginner piano lesson experience with our Blank Pop Staff Paper.

## BLANK POP STAFF PAPER

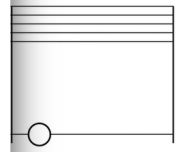
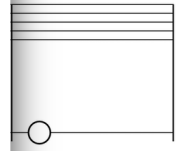
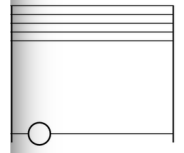
### Pop Staff Paper \_\_\_\_\_

*Write LH chord names in the Pop Staff circles.*

Pop Sta



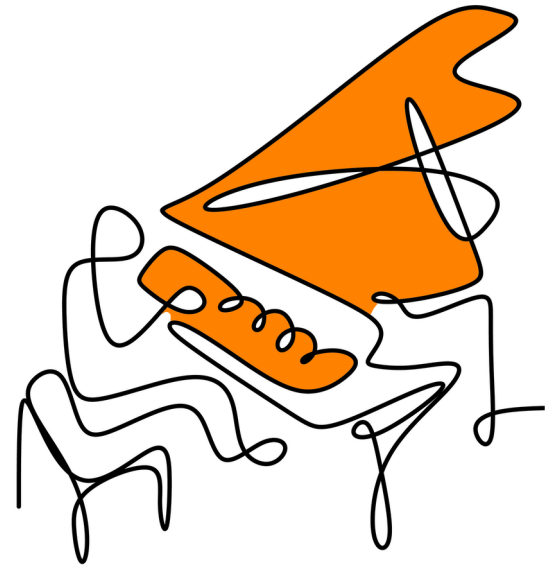
*in the Pop Staff circles.*



# OLDER BEGINNER

With its unique approach to older beginner piano education, *WunderKeys Pop Staff Piano Library For Older Beginners, Book One* is a game-changer.

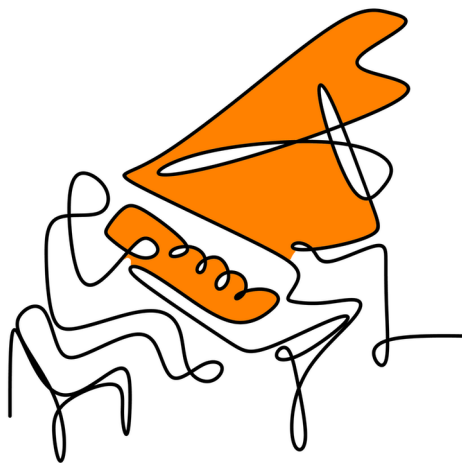
Our innovative Pop Staff enables students to play significantly more rewarding music than repertoire found in traditional older beginner books, while still learning everything (including bass staff note reading) that those methods teach.



CLASSICAL POP REPERTOIRE AND SUPPLEMENTARY ACTIVITIES

## WUNDERKEYS POP STAFF PIANO

LIBRARY FOR OLDER BEGINNERS



**BOOK ONE**

AVAILABLE ON AMAZON

**BUY NOW**

*The Pop Staff*

PIANO LIBRARY

# OLDER BEGINNER 2

WunderKeys Pop Staff Piano Library For Older Beginners, Book Two continues the awesome journey on the Pop Staff that began in Book One.

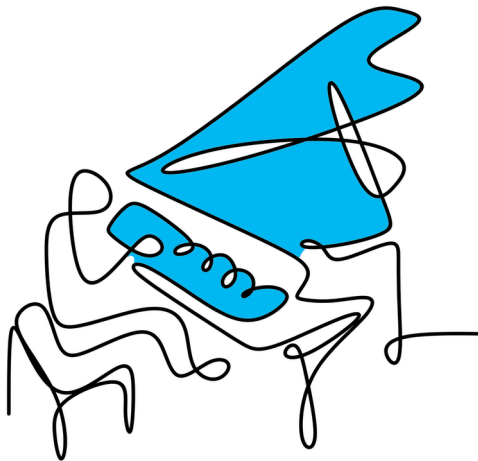
In addition to everything learned in Book One, students will also explore hands-together held notes, hands-together matching notes, hands-together non-matching notes, repeating eighth notes, stepping eighth notes, skipping eighth notes, and notes in the treble C 5-finger scale.



CLASSICAL POP REPERTOIRE AND SUPPLEMENTARY ACTIVITIES

## WUNDERKEYS POP STAFF PIANO

LIBRARY FOR OLDER BEGINNERS



BOOK TWO

AVAILABLE ON AMAZON

[BUY NOW](#)

*The Pop Staff*  
PIANO LIBRARY

# Pop Staff Paper

Write LH chord names in the Pop Staff circles.

A musical staff with a treble clef on the top line and a bass clef on the bottom line. The staff is divided into four measures by vertical bar lines. In the first measure, there is a circle on the bottom line of the bass clef. In the second measure, there is a circle on the first space. In the third measure, there is a circle on the second space. In the fourth measure, there is a circle on the third space.

A musical staff with a treble clef on the top line and a bass clef on the bottom line. The staff is divided into four measures by vertical bar lines. In the first measure, there is a circle on the bottom line of the bass clef. In the second measure, there is a circle on the first space. In the third measure, there is a circle on the second space. In the fourth measure, there is a circle on the third space.

A musical staff with a treble clef on the top line and a bass clef on the bottom line. The staff is divided into four measures by vertical bar lines. In the first measure, there is a circle on the bottom line of the bass clef. In the second measure, there is a circle on the first space. In the third measure, there is a circle on the second space. In the fourth measure, there is a circle on the third space.

A musical staff with a treble clef on the top line and a bass clef on the bottom line. The staff is divided into four measures by vertical bar lines. In the first measure, there is a circle on the bottom line of the bass clef. In the second measure, there is a circle on the first space. In the third measure, there is a circle on the second space. In the fourth measure, there is a circle on the third space.

# Pop Staff Paper

Write LH chord names in the Pop Staff circles.

A musical staff with a treble clef on the top line and a bass clef on the bottom line. The staff is divided into four measures by vertical bar lines. On the bottom line, there are four empty circles, one in each measure, intended for writing chord names.

A musical staff with a treble clef on the top line and a bass clef on the bottom line. The staff is divided into four measures by vertical bar lines. On the bottom line, there are four empty circles, one in each measure, intended for writing chord names.

A musical staff with a treble clef on the top line and a bass clef on the bottom line. The staff is divided into four measures by vertical bar lines. On the bottom line, there are four empty circles, one in each measure, intended for writing chord names.

A musical staff with a treble clef on the top line and a bass clef on the bottom line. The staff is divided into four measures by vertical bar lines. On the bottom line, there are four empty circles, one in each measure, intended for writing chord names.

# Pop Staff Paper

Write LH chord names in the Pop Staff circles.

A musical staff with a treble clef on the top line and a bass clef on the bottom line. The staff is divided into four measures by vertical bar lines. On the bottom line of the bass clef, there are four empty circles, one in each measure, intended for writing chord names.

A musical staff with a treble clef on the top line and a bass clef on the bottom line. The staff is divided into four measures by vertical bar lines. On the bottom line of the bass clef, there are four empty circles, one in each measure, intended for writing chord names.

A musical staff with a treble clef on the top line and a bass clef on the bottom line. The staff is divided into four measures by vertical bar lines. On the bottom line of the bass clef, there are four empty circles, one in each measure, intended for writing chord names.

A musical staff with a treble clef on the top line and a bass clef on the bottom line. The staff is divided into four measures by vertical bar lines. On the bottom line of the bass clef, there are four empty circles, one in each measure, intended for writing chord names.

# Pop Staff Paper

Write LH chord names in the Pop Staff circles.

A musical staff with a treble clef on the top line and a bass clef on the bottom line. The staff is divided into four measures by vertical bar lines. In the first measure, there is a circle on the bottom line of the bass clef. In the second measure, there is a circle on the first space. In the third measure, there is a circle on the second space. In the fourth measure, there is a circle on the third space.

A musical staff with a treble clef on the top line and a bass clef on the bottom line. The staff is divided into four measures by vertical bar lines. In the first measure, there is a circle on the bottom line of the bass clef. In the second measure, there is a circle on the first space. In the third measure, there is a circle on the second space. In the fourth measure, there is a circle on the third space.

A musical staff with a treble clef on the top line and a bass clef on the bottom line. The staff is divided into four measures by vertical bar lines. In the first measure, there is a circle on the bottom line of the bass clef. In the second measure, there is a circle on the first space. In the third measure, there is a circle on the second space. In the fourth measure, there is a circle on the third space.

A musical staff with a treble clef on the top line and a bass clef on the bottom line. The staff is divided into four measures by vertical bar lines. In the first measure, there is a circle on the bottom line of the bass clef. In the second measure, there is a circle on the first space. In the third measure, there is a circle on the second space. In the fourth measure, there is a circle on the third space.