



With today's printable pack, Christmas Clue, you can sprinkle in some game-based fun while still sneaking in a little skill-building.

**CHRISTMAS NOTE READING**

**CHRISTMAS CLUE**

- 1 Determine the name of Note Image 1. Cross out one sleigh with the matching note name.
- 2 Repeat Step 1 for the remaining note images. When complete, five sleighs will remain.
- 3 Arrange the five letters from the remaining sleighs on the password's blank spaces to spell a Christmas word.



\_\_\_\_\_ O R \_\_\_\_\_ T \_\_\_\_\_



1	2	3	4	5

**CLUE**

- 1 Determine the name of Note Image 1. Cross out one sleigh with the matching note name.
- 2 Repeat Step 1 for the remaining note images. When complete, five sleighs will remain.
- 3 Arrange the five letters from the remaining sleighs on the password's blank spaces to spell a Christmas word.



\_\_\_\_\_ R L \_\_\_\_\_ N \_\_\_\_\_

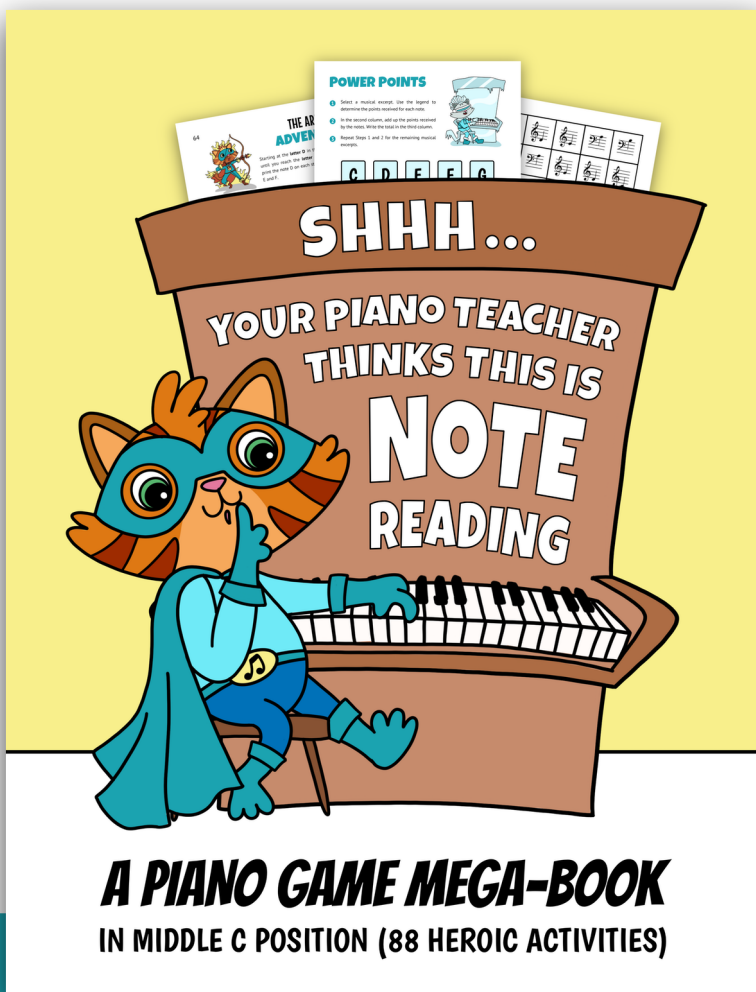


3	4	5

# ACTIVITY BOOK

“Shhh... Your Piano Teacher Thinks This Is Note Reading: A Piano Game Mega-Book In Middle C Position (88 Heroic Activities)” is an extraordinary collection of piano games that transforms learning into an adventure.

Your students will immerse themselves in colorful challenges, uncover hidden musical mysteries, roll their way through pattern play, and race through speed-based games that keep them on their toes—all while mastering note reading in middle C position.



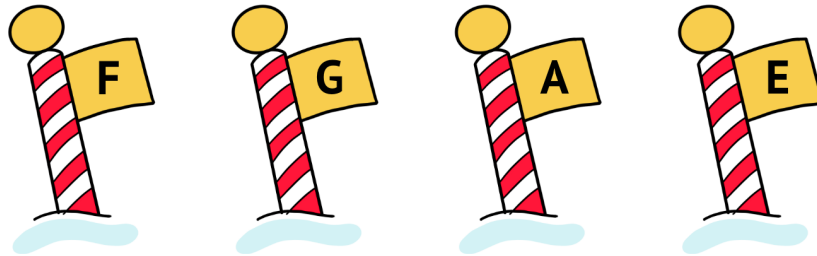
AVAILABLE ON AMAZON

**BUY NOW**

*Andrea and Trevor Dow's*  
VERY USEFUL PIANO LIBRARY

# CHRISTMAS CLUE

- 1 Determine the name of Note Image 1. Cross out one pole with the matching note name.
- 2 Repeat Step 1 for the remaining note images. When complete, four poles will remain.
- 3 Arrange the four letters from the remaining poles on the password's blank spaces to spell a Christmas word.



\_\_\_\_ R L N \_\_\_\_



1

2

3

4

5

# CHRISTMAS CLUE

- 1 Determine the name of Note Image 1. Cross out one sleigh with the matching note name.
- 2 Repeat Step 1 for the remaining note images. When complete, five sleighs will remain.
- 3 Arrange the five letters from the remaining sleighs on the password's blank spaces to spell a Christmas word.



           O R T           



1	2	3	4	5