



This mini-piece is a song sampler based on "Infinite" from "The Sweet Sorrow Solos." It is intended to give your students a glimpse of the exciting music within our newest book.

SWEET SORROW SAMPLER

ROMEO AND JULIET

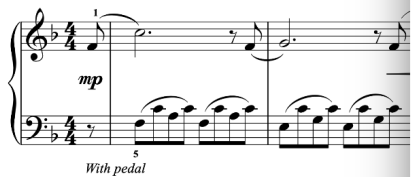
IN F MAJOR AND D MINOR FOR PIANO

V. U.

LEVEL X



Flowing ♩ = 110



ANDREA AND TREVOR DOW'S
VERY USEFUL PIANO LIBRARY

Teen Piano Music

Composed in the keys of F major and D minor (two-octave scales), The Sweet Sorrow Solos, V. U. Level X (Early Intermediate) tells the tale of Romeo and Juliet with classical-pop piano solos.

Your intermediate teen piano players will be captivated as they play through the soundtrack of this familiar tale, experienced in a brand new way!



ROMEO AND JULIET

IN F MAJOR AND D MINOR FOR PIANO

V. U.

LEVEL X



ANDREA AND TREVOR DOW'S
VERY USEFUL PIANO LIBRARY

AVAILABLE ON AMAZON

BUY NOW

Andrea and Trevor Dow's
VERY USEFUL PIANO LIBRARY



A SONG SAMPLER

"My love as deep; the
more I give to thee,
The more I have, for
both are infinite.

Flowing ♩=110

Andrea Dow

Musical score for the first system. The piece is in 4/4 time with a key signature of one flat (B-flat). The tempo is marked as 'Flowing' with a quarter note equal to 110 beats per minute. The first system consists of two staves: a treble clef staff and a bass clef staff. The treble staff begins with a melody starting on G4, marked with a first fingering (1) and a mezzo-piano (mp) dynamic. The bass staff provides a steady accompaniment of eighth notes, marked with a '5' and the instruction 'With pedal'. The first system ends with a mezzo-forte (mf) dynamic marking.

Musical score for the second system, continuing from the first. The treble staff continues the melody with a first fingering (1) and a mezzo-forte (mf) dynamic. The bass staff continues the accompaniment. The second system ends with a first fingering (1) and a mezzo-forte (mf) dynamic marking.

9

f

13

pp

5

17

a tempo

mf

21

p